

For Smart Factory



Operating |
User |

MANUAL



MES^{3D}

ERP + MES + SCADA

Auto & S.I

User Manual MES

I.	Put Away	Slide 3 > 6
II.	Shipping	Slide 7 > 10
III.	Stock	Slide 11 > 14

Table of Contents



WMS-Silver Mold



Explain

I. Put away

은 원본 적치 지시서

실행 순서 & 기능 :

1. 은 원본 적치 지시서 목록.
2. "Create" 버튼을 눌러 신규 적치 지시서 생성.

Reference	From	To	Contact	Scheduled Date	Source Document	Status	Created on
☆ WH/SMP/00013	WH/Fac1/Mockup	WH/SilvS		Today		Draft	06/11/2024 13:15:59
☆ WH/SMP/00012	WH/Fac1/Mockup	WH/SilvS		35 days ago		Draft	05/07/2024 14:36:29
☆ WH/SMP/00011	WH/Fac1/Mockup	WH/SilvS		50 days ago	MO/00693	Operation	04/22/2024 18:06:20
☆ WH/SMP/00010	WH/Fac1/Mockup	WH/SilvS		53 days ago	MO/00691	Operation	04/19/2024 15:11:05
☆ WH/SMP/00009	WH/Fac1/Mockup	WH/SilvS		56 days ago	MO/00655	Operation	04/16/2024 15:31:05
☆ WH/SMP/00008	WH/Fac1/Mockup	WH/SilvS		56 days ago	MO/00654	Operation	04/16/2024 15:26:03
☆ WH/SMP/00007	WH/Fac1/Mockup	WH/SilvS/Shelf/Bin_A01		64 days ago		Draft	04/08/2024 15:30:53
☆ WH/SMP/00006	WH/Fac1/Mockup	WH/SilvS		64 days ago		Draft	04/08/2024 15:30:04
☆ WH/SMP/00005	WH/SilvS	WH/SilvS			MO/00292	Done	04/08/2024 15:16:19
☆ WH/SMP/00004	WH/Fac1/Mockup	WH/SilvS			MO/00223	Done	04/05/2024 12:37:50
☆ WH/SMP/00003	WH/SilvS	WH/SilvS		67 days ago	MO/00188	Operation	04/05/2024 10:14:11
☆ WH/SMP/00002	WH/SilvS	WH/SilvS		69 days ago		Draft	04/03/2024 16:55:07
☆ WH/SMP/00001	WH/Fac1/Mockup	WH/SilvS		70 days ago		Draft	04/02/2024 16:42:46

WMS-Silver Mold



Explain

I. Put away

적치 지시서 작성

실행 순서 & 기능 :

1. 작업 유형 및 제품의 이동 경로 지정.
2. 입고될 제품 정보 입력.
3. "Save" 버튼을 눌러 저장.

WMS KPI Material Warehouse WIP Warehouse FG Warehouse Mold Warehouse Silver Warehouse Lot/Serial Number

Silver Mockup PutAway / New

Save Discard

Cancel Draft Operation Done

Operation Type: Jpark: Silver Mockup Putaway
From: WH/Fac1/Mockup
To: WH/SilvS
Scheduled Date: 06/12/2024 10:25:21
Source Document

Item Operations

Item	Demand Qty	Done	UoM	2Demand Qty	2Receive	UoM
S-BP-T2C-3.5-18K-7.69GR-W-F-8-12CT+1	4.37	0.00	g	1.00	0.00	pcs
S-BP-T2C-3.5-18K-7.69GR-W-F-8-12CT+2	3.34	0.00	g	1.00	0.00	pcs

Add a line

WMS-Silver Mold



Explain

I. Put away

적치 지시서 승인

실행 순서 & 기능 :

1. "Confirm" 버튼을 눌러 승인.

WMS KPI Material Warehouse WIP Warehouse FG Warehouse Mold Warehouse Silver Warehouse Lot/Serial Number

Silver Mockup PutAway / WH/SMP/00014

Edit Create Print Action 1/1 < >

Confirm Cancel Draft Operation Done

1

Operation Type Jpark: Silver Mockup Putaway Scheduled Date 06/12/2024 10:25:21

From WH/Fac1/Mockup Source Document

To WH/SIVS

Item Operations

Item	Demand Qty	Done	UoM	2Demand Qty	2Receive	UoM	
S-BP-T2C-3.5-18K-7.69GR-W-F-8-1.2CT+1	4.37	0.00	g	1.00	0.00	pcs	🗑
S-BP-T2C-3.5-18K-7.69GR-W-F-8-1.2CT+2	3.34	0.00	g	1.00	0.00	pcs	🗑

Add a line

WMS-Silver Mold



Explain

I. Put away

적치 지시서 수행

WMS KPI Material Warehouse WIP Warehouse FG Warehouse Mold Warehouse Silver Warehouse Lot/Serial Number

Silver Mockup PutAway / WH/SMP/00014

Save Discard 1/1 < >

Complete Mold PutAway Cancel Draft Operation Done

4

Operation Type Jpark: Silver Mockup Putaway Scheduled Date 06/12/2024 10:25:21

From WH/Fac1/Mockup Source Document

To WH/SilvS

Item Operations

Item	From	To	Lot Code	Done	UoM	2Demand Qty	2Receive	UoM
S-BP-T2C-3.5-18K-7.69GR-W-F-8-1.2CT+1	WH/Fac1/Mockup	WH/SilvS/Shelf1/Bin_A01	S-BP-T2C-3.5-18K-7.69GR-W-F-8-1.2CT+1-Silver-4.37g-1pcs-24...	4.37	g	1.00	1.00	pcs
S-BP-T2C-3.5-18K-7.69GR-W-F-8-1.2CT+2	WH/Fac1/Mockup	WH/SilvS/Shelf2	S-BP-T2C-3.5-18K-7.69GR-W-F-8-1.2CT+2-Silver-3.34g-1pcs-24...	3.34	g	1.00	1.00	pcs
Add a line		1		2		3		

실행 순서 & 기능 :

* Operation tab에서 진행.

1. 적치 위치 지정.
2. 적치 중량 입력.
3. 적치 수량 입력.
4. "Complete Mold PutAway" 버튼을 눌러 완료.

WMS-Silver Mold



Explain

II. Shipping

출고 지시서 작성

실행 순서 & 기능 :

1. "Create" 버튼을 눌러 신규 출고 지시서 작성.

WMS KPI Material Warehouse WIP Warehouse FG Warehouse Mold Warehouse Silver Warehouse Lot/Serial Number									
Silver Mockup Shipping									
Reference	From	To	Contact	Scheduled Date	Source Document	Status	Created on		
<input type="checkbox"/> ☆ WH/SiIMS/00009	WH/SilvS	WH/Fac1/Mockup		Today		Operation	06/12/2024 10:46:07		
<input type="checkbox"/> ☆ WH/SiIMS/00008	WH/SilvS	WH/Fac1/Mockup				Done	04/05/2024 10:30:09		
<input type="checkbox"/> ☆ WH/SiIMS/00007	WH/SilvS	WH/Fac1/Mockup				Done	04/05/2024 10:17:45		
<input type="checkbox"/> ☆ WH/MS/00001	WH/SilvS	WH/Fac1/Mockup				Done	04/04/2024 16:27:17		

WMS-Silver Mold



Explain

II. Shipping

출고 지시서 작성

실행 순서 & 기능 :

1. 작업 유형 및 제품의 이동 경로 지정.
2. 출고될 제품 정보 입력.
3. "Save" 버튼을 눌러 저장.

WMS KPI Material Warehouse WIP Warehouse FG Warehouse Mold Warehouse Silver Warehouse Lot/Serial Number

Silver Mockup Shipping / New

Save Discard

Cancel Draft Operation Done

Operation Type Jpark: Silver Mockup Shipping Scheduled Date 06/12/2024 10:43:26

From WH/SilvS Source Document

To WH/Fac1/Mockup

Item Operations

Item	Demand Qt...	Done	UoM	2Demand Q...	2Receive	UoM
S-BP-T2C-3.5-18K-769GR-W-F-8-12CT+1	4.37	0.00	g	1.00	0.00	pcs

Add a line

WMS-Silver Mold



Explain

II. Shipping

출고 지시서 승인

실행 순서 & 기능 :

1. "Confirm" 버튼을 눌러 승인.

WMS KPI Material Warehouse WIP Warehouse FG Warehouse Mold Warehouse Silver Warehouse Lot/Serial Number

Silver Mockup Shipping / WH/SilMS/00009

Edit Create Print Action 4 / 4 < >

Confirm 1 Cancel Draft Operation Done

Operation Type Jpark: Silver Mockup Shipping Scheduled Date 06/12/2024 10:43:26

From WH/SilvS Source Document

To WH/Fac1/Mockup

Item Operations

Item	Demand Qty	Done UoM	2Demand Qty	2Receive	UoM
S-BP-T2C-3.5-18K-7.69GR-W-F-8-12CT+1	4.37	0.00 g	1.00	0.00	pcs

Add a line

WMS-Silver Mold



Explain

II. Shipping

출고 지시서 수행

WMS KPI Material Warehouse WIP Warehouse FG Warehouse Mold Warehouse Silver Warehouse Lot/Serial Number

Silver Mockup Shipping / WH/SilMS/00009

Save Discard 4 / 4

Complete Mold Shipping 3 Cancel Draft Operation Done

Operation Type Jpark: Silver Mockup Shipping Scheduled Date 06/12/2024 10:43:26

From WH/SilvS Source Document

To WH/FacI/Mockup

Item Operations

Item	From	To	Lot Code	Done	UoM	2Demand Qty	2Receive	UoM
S-BP-T2C-3.5-18K-7.69GR-W-F-8-1.2CT+1	WH/SilvS/Shelf1/Bin_A01	WH/FacI/Mockup	S-BP-T2C-3.5-18K-7.69GR-W-F-8-1.2CT+1-Silver-4.37g-1pcs-240612-001	4.37 g		1.00	1.00	pcs

Add a line

실행 순서 & 기능 :

* Operation tab에서 진행.

1. 출고 중량 입력.
2. 출고 수량 입력.
3. "Complete Mold Shipping" 버튼을 눌러 실행.

WMS-Silver Mold



Explain

III. Stock

재고 목록

실행 순서 & 기능 :

1. 은 원본 창고 재고 목록 표시.

WMS KPI Material Warehouse WIP Warehouse FG Warehouse Mold Warehouse Silver Warehouse Lot/Serial Number												
Silver Stock												
Mold Product Model Search...												
Filters Group By Favorites 1-3 / 3												
Mold Product Model	Product	Location	Lot/Serial Number	Package	Available Quantity	On Hand Quantity	Unit of Measure	2nd Quantity	2nd Uom	Created on	Main type	
▼ Undefined (4)					9,991.10	10,000.90						
<input type="checkbox"/>	S-TB-FC(LT)-082+1	WH/SilvS	S-TB-FC(LT)-082+1-2...		1.00	2.00	g	1.00	pcs	03/29/2024 13:58:13		
<input type="checkbox"/>	Rubber Resin	WH/SilvS	Rubber Resin Manual		9,990.00	9,998.00	g	0.00	pcs	03/29/2024 13:59:33		
<input type="checkbox"/>	S-HC-070(6.5)-18K...	WH/SilvS	S-HC-070(6.5)-18K-...		0.10	0.10	g	1.00	pcs	04/03/2024 16:46:06		
<input type="checkbox"/>	S-HC-070(6.5)-18K...	WH/SilvS	S-HC-070(6.5)-18K-...	1	0.00	0.80	g	1.00	pcs	04/05/2024 10:13:15		
▼ S-BP-T2C-3.5-18K-7.69GR-W-F-8-1.2CT (2)					3.34	7.71						
<input type="checkbox"/>	S-BP-T2C-3.5-18K-7.6...	S-BP-T2C-3.5-18K-7.6...	WH/SilvS/Shelf2	S-BP-T2C-3.5-18K-7.6...	3.34	3.34	g	1.00	pcs	06/12/2024 10:40:14		
<input type="checkbox"/>	S-BP-T2C-3.5-18K-7.6...	S-BP-T2C-3.5-18K-7.6...	WH/SilvS/Shelf1/Bin_A...	S-BP-T2C-3.5-18K-7.6...	0.00	4.37	g	1.00	pcs	06/12/2024 10:40:14		
▼ S-T4C3-(2.0-3.5)-17inch-18K-W-25.02gr-5.12 (1)					1.00	1.00						
<input type="checkbox"/>	S-T4C3-(2.0-3.5)-17in...	S-T4C3-(2.0-3.5)-17in...	WH/SilvS/Shelf1	S-T4C3-(2.0-3.5)-17in...	1.00	1.00	g	1.00	pcs	04/09/2024 13:34:20		

WMS-Silver Mold



Explain

III. Stock

은 원본 재고 재주조

실행 순서 & 기능 :

1. 재 주소할 은 원본 원편의 체크 박스 선택.
2. 체크 박스 선택 시 표시되는 메뉴 중의 "Recast" 버튼 눌러 진행.
3. "Confirm" 버튼을 눌러 승인.
4. MES > MMS > Recasting List로 승인된 은 원본 목록 표시.

Confirmation

These lots will create recasting list, are you sure you want to do this?

Lot
S-BP-T2C-3.5-18K-7.69GR-W-F-8-1.2CT+2

Product	Location	Lot/Serial Number	Available Quantity	Quantity	Unit of Measure
S-BP-T2C-3.5-18K-7.69GR-W-F-8-1.2CT+2	WH/Silv/Sheff2	S-BP-T2C-3.5-18K-7.69GR-W-F-8-1.2CT+2-Silver-3.34g-1pcs-240612-001	3.34	3.34	g

Add a line

WMS KPI Confirm **3** Cancel

Silver Stock

Split Merge **Recast** **2** Scrap Print Labels 1 selected

Print Action

Mold Product Model	Product	Location	Lot/Serial Number	Package	Available Quantity	On Hand Quantity	Unit of Measure	2nd Quantity	2nd Uom	Created on	Main type
▶ Undefined (3)					1.10	2.90					
▼ S-BP-T2C-3.5-18K-7.69GR-W-F-8-1.2CT (2)					3.34	7.71					
<input checked="" type="checkbox"/>	S-BP-T2C-3.5-18K-7.6...	S-BP-T2C-3.5-18K-7.6...	WH/Silv/Sheff2	S-BP-T2C-3.5-18K-7.6...	3.34	3.34	g	1.00	pcs	06/12/2024 10:40:14	
<input type="checkbox"/>	S-BP-T2C-3.5-18K-7.6...	S-BP-T2C-3.5-18K-7.6...	WH/Silv/Sheff1/Bin_A...	S-BP-T2C-3.5-18K-7.6...	0.00	4.37	g	1.00	pcs	06/12/2024 10:40:14	

MES KPI PMS QMS MMS Repair Scrap Process Closing Report Lot/Serial Number

Recasting List

Search...

Filters Group By Favorites

Return Type...	Created on	Process	Line	Step	Type...	Product	Lot	Quantity	From
<input type="checkbox"/>	Stock	06/12/2024 12:43:21	4			S-BP-T2C-3.5-18K-7.69GR-...	S-BP-T2C-3.5-18K-7.69GR-...	3.34	WH/Silv/Sheff2

WMS-Silver Mold



Explain

III. Stock

은 원본 재고 폐기

Confirm

This will scrap all selected records. Do you want to continue?

Confirm Cancel

Silver Stock

Mold Product Model Search...

Split Merge Recast Scrap Print Labels 1 selected

Filters Group By Favorites 1-3 / 3

Print Action

<input type="checkbox"/>	Mold Product Model	Product	Location	Lot/Serial Number	Package	Available Quantity	On Hand Quantity	Unit of Measure	2nd Quantity	2nd Uom	Created on	Main type
▼ Undefined (4)						9,991.10	10,000.90					
<input type="checkbox"/>		S-TB-FC(LT)-082+1	WH/SilvS	S-TB-FC(LT)-082+1-2...		1.00	2.00	g	1.00	pcs	03/29/2024 13:58:13	
<input checked="" type="checkbox"/>		Rubber Resin	WH/SilvS	Rubber Resin Manual		9,990.00	9,998.00	g	0.00	pcs	03/29/2024 13:59:33	
<input type="checkbox"/>		S-HC-070(6.5)-18K-...	WH/SilvS	S-HC-070(6.5)-18K-...		0.10	0.10	g	1.00	pcs	04/03/2024 16:46:06	
<input type="checkbox"/>		S-HC-070(6.5)-18K-...	WH/SilvS	S-HC-070(6.5)-18K-...		0.00	0.80	g	1.00	pcs	04/05/2024 10:13:15	

WMS KPI Material Warehouse WIP Warehouse FG Warehouse Mold Warehouse Silver Warehouse Lot/Serial Number

Silver Stock

Mold Product Model Search...

Filters Group By Favorites 1-3 / 3

<input type="checkbox"/>	Mold Product Model	Product	Location	Lot/Serial Number	Package	Available Quantity	On Hand Quantity	Unit of Measure	2nd Quantity	2nd Uom	Created on	Main type
▼ Undefined (3)						1.10	2.90					
<input type="checkbox"/>		S-TB-FC(LT)-082+1	WH/SilvS	S-TB-FC(LT)-082+1-2...		1.00	2.00	g	1.00	pcs	03/29/2024 13:58:13	
<input type="checkbox"/>		S-HC-070(6.5)-18K-...	WH/SilvS	S-HC-070(6.5)-18K-...		0.10	0.10	g	1.00	pcs	04/03/2024 16:46:06	
<input type="checkbox"/>		S-HC-070(6.5)-18K-...	WH/SilvS	S-HC-070(6.5)-18K-...		0.00	0.80	g	1.00	pcs	04/05/2024 10:13:15	

실행 순서 & 기능 :

1. 폐기할 은 원본 원편의 체크 박스 선택.
2. 체크 박스 선택 시 표시되는 메뉴 중의 "Scrap" 버튼 눌러 진행.
3. 경고창의 "Confirm" 버튼 눌러 시행.
4. Stock 정보에서 자재 말소.

WMS-Silver Mold



Explain

III. Stock

은 원본 재고 라벨 인쇄

WMS KPI Material Warehouse WIP Warehouse FG Warehouse Mold Warehouse Silver Warehouse Lot/Serial Number

Silver Stock

Mold Product Model Search...

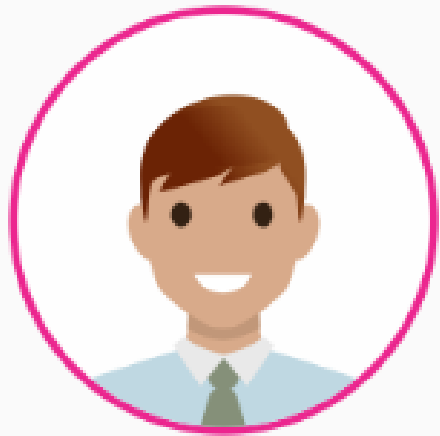
Split Merge Recast Scrap **Print Labels** 1 selected → Select all 6

Print Action

<input checked="" type="checkbox"/>	Mold Product Model	Product	Location	Lot/Serial Number	Package	Available Quantity	On Hand Quantity	Unit of Measure	2nd Quantity	2nd Uom	Created on	Main typ
▶ Undefined (3)						1.10	2.90					
▶ S-BP-T2C-3.5-18K-7.69GR-W-F-8-1.2CT (2)						0.00	7.71					
▼ S-T4C3-(2.0-3.5)-17inch-18K-W-25.02gr-5.12 (1)						1.00	1.00					
<input checked="" type="checkbox"/>	S-T4C3-(2.0-3.5)-17inch...	S-T4C3-(2.0-3.5)-17inch...	WH/Silvs/SheL...	S-T4C3-(2.0-3.5)-17inch...		1.00	1.00 g		100	pcs	04/09/2024 13:34:20	

실행 순서 & 기능 :

1. 라벨 인쇄할 은 원본 원편의 체크 박스 선택.
2. 체크 박스 선택 시 표시되는 메뉴 중의 "Print Labels" 버튼 눌러 인쇄.



Thank you for using
For Smart Factory

MES 3D

ERP + **MES** + **SCADA**